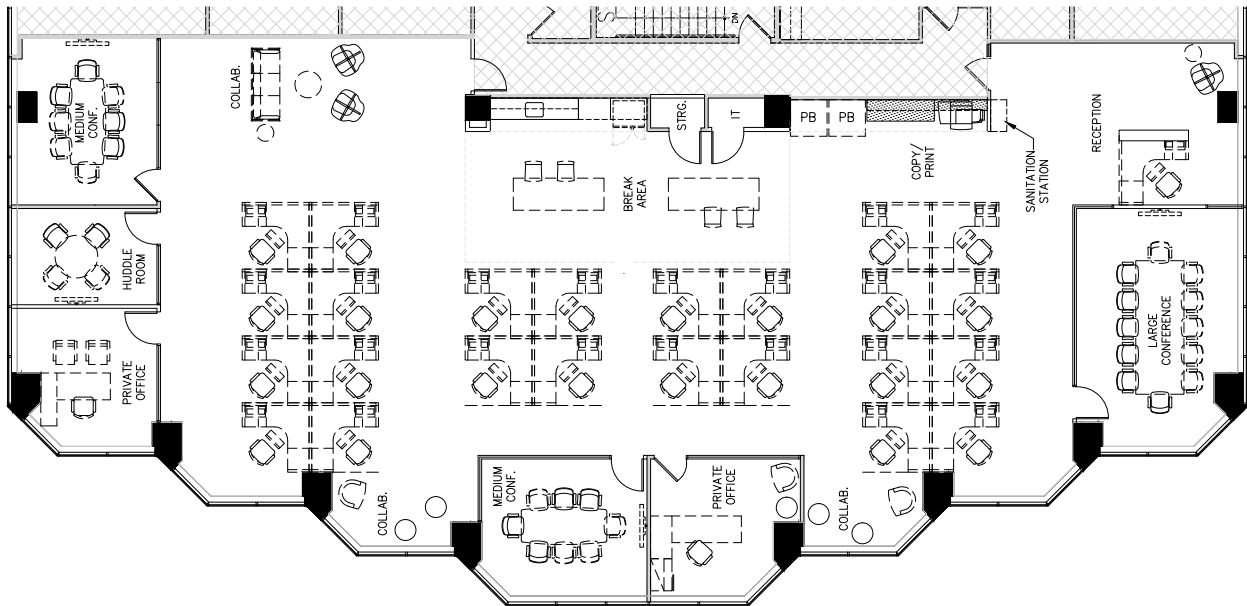




## LAKE MERRITT PLAZA

# SUITE 610/620 - 5,942 RSF

Two suites currently being combined. Creative build with open kitchen, polished concrete flooring. Lake Merritt views.



[lakemerritt-plaza.com](http://lakemerritt-plaza.com)

**Charles F. Allen, LEED AP**  
Principal, Managing Director  
RE Lic #01158267  
[charlie.allen@avisonyoung.com](mailto:charlie.allen@avisonyoung.com)  
510.333.8477

**Anthony Shell, LEED® AP**  
Principal  
RE Lic #01743033  
[anthony.shell@avisonyoung.com](mailto:anthony.shell@avisonyoung.com)  
510.254.4263

**Amber Merrigan**  
Vice President  
RE Lic #01905162  
[amber.merrigan@avisonyoung.com](mailto:amber.merrigan@avisonyoung.com)  
510.254.4267

**BEACON**  
CAPITAL PARTNERS  
DISTINCTIVE WORKPLACES  
DISTINCTLY BEACON

**AVISON  
YOUNG**